

TRI-SOLENOID VALVE MS-I

**Elektromagnetventil
2/2 Wege, N.C.
indirekt gesteuert**

**Electromagnetic valve
2/2 way, N.C.
indirectly controlled**



Technische Daten:

Anschluss: 3/8", 1/2", 3/4", 1"
 Nennweite: 13 - 25 mm
 Temperaturbereich: siehe Tabelle
 Betriebsdruck: siehe Tabelle
 Max. Druck: 25 bar
 Mindestbetriebsdruck: 0.15 bar

Körper: Messing OT58 / CW614N
 Ankerführungsrohr: Edelstahl AISI303 / DIN1.4305
 Fester Anker: Edelstahl AISI430Fr / DIN1.4105IL
 Beweglicher Anker: Edelstahl AISI430Fr / DIN1.4104IL
 Phasenverschieberring: Kupfer - Cu 99,9%
 Feder: Edelstahl AISI302 / DIN1.4310
 Sitz: Messing OT58 / CW614N
 Dichtung: FPM

Merkmale:
 Elektro-Konformität: IEC 335
 Schutzart: IP 65 (mit Stecker montiert)

Einsatzbereiche:
 - Maschinen- und Anlagenbau
 - Pneumatik
 - Vakuumtechnik

Optionen:
 - andere Dichtmaterialien (EPDM, NBR)
 - Handbetätigung

Auf Anfrage:
 - vernickelt
 - langsam schliessende Version
 - Vakuum Variante für Luft / Gas

Technical Data:

Connection: 3/8", 1/2", 3/4", 1"
 Nominal diameter: 13 - 25 mm
 Temperature range: see table
 Working pressure: see table
 Max. pressure: 25 bar
 Min. operating pressure: 0.15 bar

Body: Brass OT58 / CW614N
 Armature tube: Stainless steel AISI303 / DIN1.4305
 Fixed core: Stainless steel AISI430Fr / DIN1.4105IL
 Plunger: Stainless steel AISI430Fr / DIN1.4105IL
 Phase displacement ring: Copper - Cu 99,9%
 Spring: Stainless steel AISI302 / DIN1.4310
 Orifice: Brass OT58 / CW614N
 Seal: FPM

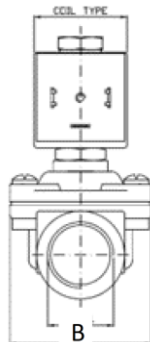
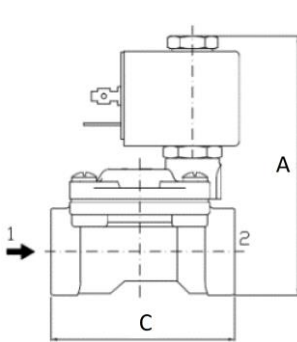
Characteristics:
 Electrical conformity: IEC 335
 Protection degree: IP 65 (assembled with electric plug)

Application:
 - Machine and plant construction
 - Pneumatic
 - Vacuum engineering

Options:
 - other sealing materials (EPDM, NBR)
 - Manual override

On request:
 - nickel-plated
 - slow closing version
 - Vacuum variant for air / gas

TRI-SOLENOID VALVE MS-I

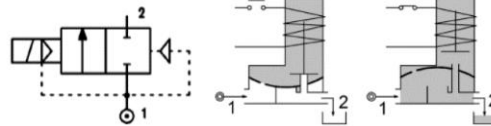


Ventil Valve		A	B	C	Spule Coil	Gewicht (inkl. Spule) Weight (Coil included) Kg
R2SP G3/8"	dn 13mm	83	46	58	Serie 2200	0.44
R2SP G1/2"	dn 13mm	83	46	58	Serie 2200	0.41
R2SP G3/4"	dn 19mm	93	56	78	Serie 2200	0.40
R2SP G1"	dn 25mm	104	74	95	Serie 2200	0.67

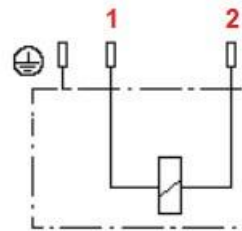
Ventilkörper / Valve body 2/2 Serie R2SP Normally Close											
Gewinde Connection G ISO 228	Code	Nr. Tri-Matic	Sitz Orifice Ø mm	Kv m³/h	Differentialdruck Differential pressure bar			Spule Coil		Dichtung Seal	Temperaturbereich Temperature range Fluids
					Min	Max M.O.P.D.*		Series	Breite Width mm		
						AC	DC				
G3/8"	R2SPCCGV12	1724773	13	2.2	0.15	16	16	2200	22	FPM	-10°C - +160°C
G1/2"	R2SPCDGV12	1724774	13	2.5	0.15	16	16				
G3/4"	R2SPCEGV18	1724775	19	5.5	0.15	14	14				
G1"	R2SPCFGV25	1724776	25	10.2	0.15	10	10				

* maximum operating pressure differential

TRI-SOLENOID VALVE MS-I



Spule / Coil							
Serie	Code	Nr. Tri-Matic	Spannung Voltage	Nennleistung Nominal Power			Elektrischer Anschluss Electrical connection
				AC VA Inrush	AC VA Holding	DC Watt	
Series 2200 Width 22mm	R2801	1724779	24V DC	-	-	7	Industrial Standard 22 mm
	R280B	1724780	24V AC	11.5	9	-	
	R280E	1724781	230V AC	11.5	9	-	



Stecker / Connector		
Stecker schwarz Connector black	Kabelverschraubung PG9 Cable gland PG9	1700129

Bitte fragen Sie unsere aktuellen Preise an!

Do not hesitate to contact us for current prices!