

TRI-FIT INOX

Gewindefittings aus Edelstahl / Raccords en Inox

Gewindefittings aus Edelstahl

Raccords en Inox



Merkmale:

Material: V4A Stahl / AISI 316 / DIN 1.4401 / CF8M
oder
V4A Stahl / AISI 316L / DIN 1.4404 / CF3M
Gewinde: UNI 339, ISO 228, DIN 2999, BS 21
Innengewinde zylindrisch
Aussengewinde konisch
Betriebsdruck: Max. 10 bar

**(Bitte beachten sie, dass bei Gussteilen die
Abmessungen abweichen können.)**

Auf Anfrage:

- Weitere Dimensionen
- Andere Ausführungen, Gewinde in NPT
- Andere Werkstoffe
- Ausführungen für höhere Drücke
- Werkstoffzeugnis für Drehteile
(für Feigussteile nicht lieferbar)

Caractéristiques:

Matière: Acier Inox / AISI 316 / DIN 1.4401 / CF8M
ou
Acier Inox / AISI 316L / DIN 1.4404 / CF3M
Filetage: UNI 339, ISO 228, DIN 2999, BS 21
Filetage femelle cylindrique
Filetage mâle conique
Pression de service: Max. 10 bar

**(Veuillez noter que les dimensions des pièces moulées
peuvent différer.)**

Sur demande:

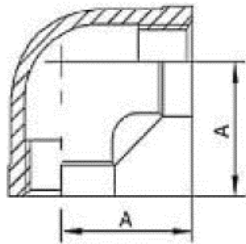
- Dimensions additionnelles
- Autres exécutions, NPT filet de connexion
- Autres matériaux
- Versions pour des pressions plus élevées
- Certificat de matière pour les pièces tournées
(non disponible pour les castings d'investissement)

TRI-FIT INOX

Gewindefittings aus Edelstahl / Raccords en Inox

Winkel 90°

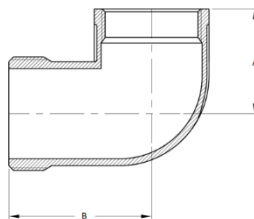
Equerre 90°



Gewinde / Filetage	No. TRI-MATIC	A
1/8"	2503752	17
1/4"	2503753	19
3/8"	2503754	23
1/2"	2503755	27
3/4"	2503756	32
1"	2503757	38
1 1/4"	2503758	40
1 1/2"	2503759	43
2"	2503760	54
2 1/2"	2506223	66.5

Winkel 90° IG/AG

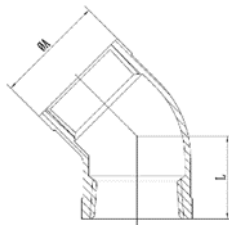
Equerre 90° mâle/femelle



Gewinde / Filetage	No. TRI-MATIC	A	B
1/8"	2503768	15.5	25
1/4"	2503769	19	27
3/8"	2503770	22	28
1/2"	2503771	23	36
3/4"	2503772	26.6	41
1"	2503773	31	47.2
1 1/4"	2503774	37	55.1
1 1/2"	2503899	44	52
2"	2503900	52	73
2 1/2"	1716691	68.6	88.2

Winkel 45°

Equerre 45°



Gewinde / Filetage	No. TRI-MATIC	A	L
1/8"	2503897	13.1	13.3
1/4"	2503761	16.9	16.1
3/8"	2503762	20.5	19.4
1/2"	2503763	27.5	19.3
3/4"	2503764	32.5	22
1"	2503765	39.5	24.4
1 1/4"	2503766	49	30.9
1 1/2"	2504161	55	31.7
2"	2503767	67.5	37.6

Bitte fragen Sie unsere aktuellen Preise an!

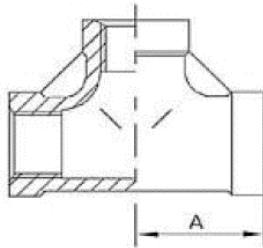
N'hésitez pas à demander nos prix actuels!

TRI-FIT INOX

Gewindefittings aus Edelstahl / Raccords en Inox

T-Stück

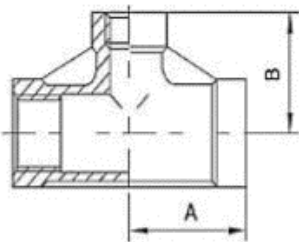
Té



Gewinde / Filetage	No. TRI-MATIC	A
1/8"	2503775	15
1/4"	2503776	19
3/8"	2503777	23
1/2"	2503778	27
3/4"	2503779	32
1"	2503780	38
1 1/4"	2503781	40
1 1/2"	2503782	44.5
2"	2503783	54
2 1/2"	2506222	68.6

T-Stück reduziert

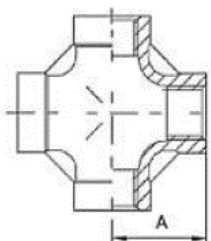
Té réduite



Gewinde / Filetage	No. TRI-MATIC	A	B
1/2"-1/4"-1/2"	1722656	23	24
1/2"-3/8"-1/2"	1705527	24	26.5
3/4"-1/2"-3/4"	1717970	29	30
1"-1/2"-1"	1712341	32	33
1"-3/4"-1"	1709473	35	34
2"-3/4"-2"	1709893	42	51
2"-1"-2"	1722658	42	51
2"-1 1/2"-2"	1722659	49	55.5

Kreuz

Croix



Gewinde / Filetage	No. TRI-MATIC	A
1/8"	2503784	15
1/4"	2503785	17
3/8"	2503901	21
1/2"	2503902	25
3/4"	2503903	32
1"	2503904	38
1 1/4"	2503786	45
1 1/2"	2504159	48
2"	2504160	57

Bitte fragen Sie unsere aktuellen Preise an!

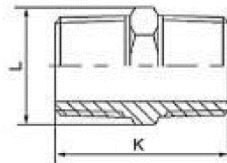
N'hésitez pas à demander nos prix actuels!

TRI-FIT INOX

Gewindefittings aus Edelstahl / Raccords en Inox

Doppelnippel 6kt. / 8kt.

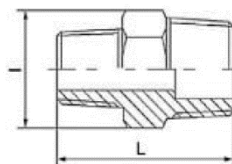
Double mamelon hex. / oct.



Gewinde / Filetage	No. TRI-MATIC	L	K
1/8"	2503885	11.5	26
1/4"	2503886	14.5	26
3/8"	2503887	18	28
1/2"	2503888	22	35
3/4"	2503889	28	37
1"	2503890	34.5	43
1 1/4"	2503891	43	49.5
1 1/2"	2503892	49.5	49.5
2"	2503893	62.5	58.2
2 1/2"	2504418	78	71
3"	2504445	90	68

Reduziernippel 6kt. / 8kt.

Mamelon der réduction hex. / oct.



Gewinde / Filetage	No. TRI-MATIC	I	L
1/4"-1/8"	2504475	17	29.3
3/8"-1/8"	2504516	20.5	32.5
3/8"-1/4"	2504476	18	26.5
1/2"-1/8"	2504477	25.5	33.5
1/2"-1/4"	2504478	22	30
1/2"-3/8"	2504479	22	30.5
3/4"-1/4"	2504480	32	36.5
3/4"-3/8"	2504481	28	32
3/4"-1/2"	2504482	28	35.5
1"-1/4"	2504483	38	39
1"-3/8"	2504484	38	40
1"-1/2"	2504485	38	42.5
1"-3/4"	2504486	34.5	39.5
1 1/4"-1/2"	2504552	43.5	42.5
1 1/4"-3/4"	2504487	43.5	44.5
1 1/4"-1"	2504488	43.5	44.5
1 1/2"-1"	2504489	50	50
1 1/2"-1 1/4"	2504490	50	50
2"-1"	2504491	61.5	50.5
2"-1 1/4"	2504492	61.5	55.5
2"-1 1/2"	2504493	61.5	57
2 1/2" - 2"	1707815	80.5	64.5
3"-2"	2504494	93.5	66.5

Bitte fragen Sie unsere aktuellen Preise an!

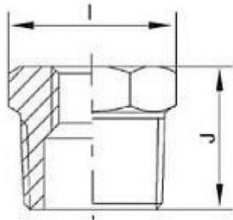
N'hésitez pas à demander nos prix actuels!

TRI-FIT INOX

Gewindefittings aus Edelstahl / Raccords en Inox

Reduzierbüchse 6kt. / 8kt.

Douille de réduction hex. / oct.



Gewinde / Filetage	No. TRI-MATIC	I	J
1/4"-1/8"	2503848	17	18.2
3/8"-1/8"	2503932	17.5	16
3/8"-1/4"	2503849	18	16
1/2"-1/8"	2503850	22	19
1/2"-1/4"	2503851	22	19.5
1/2"-3/8"	2503852	22	19.5
3/4"-1/4"	2503853	27.4	20.3
3/4"-3/8"	2503854	27.4	20.3
3/4"-1/2"	2503855	27.5	21
1"-1/4"	2503856	34.3	24.1
1"-3/8"	2503857	34.3	24.1
1"-1/2"	2503930	34.5	24
1"-3/4"	2503858	34.5	24
1 1/4"-1/2"	2503859	43	29.5
1 1/4"-3/4"	2503860	43	29.5
1 1/4"-1"	2503861	43	27
1 1/2" - 1/2"	1710405	48.2	27
1 1/2"-3/4"	1717761	48.2	27
1 1/2"-1"	2503862	50	28
1 1/2"-1 1/4"	2503863	50	28
2"-1/2"	1715197	61.5	35
2"-1"	2503864	61	32
2"-1 1/4"	2503865	61	32
2"-1 1/2"	2503866	61	32
2 1/2"-2"	2503867	76.2	41
3"-1 1/2"	1722436	90	37
3"-2"	1707933	90	37
3"-2 1/2"	1710318	90	45

Bitte fragen Sie unsere aktuellen Preise an!

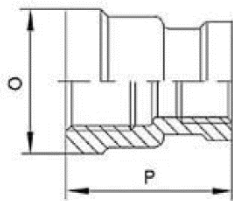
N'hésitez pas à demander nos prix actuels!

TRI-FIT INOX

Gewindefittings aus Edelstahl / Raccords en Inox

Reduziermuffe

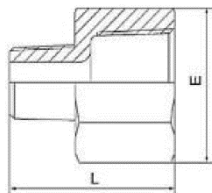
Manchon de réduction



Gewinde / Filetage	No. TRI-MATIC	O	P
1/4"-1/8"	2503832	17.5	27
3/8"-1/8"	1703372	21.5	30
3/8"-1/4"	2503833	21.5	30
1/2"-1/8"	2503834	24	24
1/2"-1/4"	2503835	27.5	36
1/2"-3/8"	2503836	27.5	36
3/4"-1/4"	2503837	31	35
3/4"-3/8"	2503838	31	35
3/4"-1/2"	2503839	31	36
1"-1/4"	2503840	37	31
1"-3/8"	2503841	38.5	40.5
1"-1/2"	2503842	38.9	42
1"-3/4"	2503843	38.5	42
1 1/4"-1/2"	2503844	48.5	44.5
1 1/4"-3/4"	2503845	48.5	44.5
1 1/4"-1"	2503846	48.5	44.5
1 1/2" - 1/2"	1711316	54.5	48.5
1 1/2"-1"	2503847	54.5	48.5
1 1/2"-1 1/4"	2503925	54.5	48.5
2"-1"	2503926	67	56.5
2"-1 1/4"	2503927	67	56.5
2"-1 1/2"	2503928	67	56.5
2 1/2"-2"	2503929	81.5	62.5
3"-2"	2504495	96.5	67.5

Reduzierstutzen

Buse de réduction



Gewinde / Filetage	No. TRI-MATIC	E	L
1/2"-1/4"	1722666	23.5	29
1/2"-3/8"	1722668	23.5	29.5
3/4"-3/8"	1722669	29.5	33
3/4"-1/2"	1722670	29.5	36
1"-1/2"	1722671	37	39
1"-3/4"	1722672	37	40.5
1 1/4"-3/4"	1722673	45.5	42
1 1/4"-1"	1722674	45.5	44.5
1 1/2"-3/4"	1722675	52.5	42
1 1/2"-1"	1722677	52.5	44.5
1 1/2"-1 1/4"	1722678	52.5	47
2"-1"	1722679	64	49
2"-1 1/4"	1722680	64	51.5
2"-1 1/2"	1722681	64	51.5

Bitte fragen Sie unsere aktuellen Preise an!

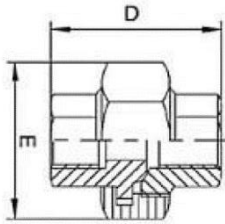
N'hésitez pas à demander nos prix actuels!

TRI-FIT INOX

Gewindefittings aus Edelstahl / Raccords en Inox

Kupplung IG/IG

Accouplement femelle/femelle



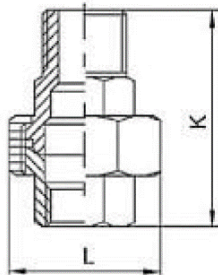
Gewinde / Filetage	No. TRI-MATIC*	No. TRI-MATIC**	D	E
1/8"	2503787	2506210	27.5	21
1/4"	2503788	2506211	30	24
3/8"	2503789	2506212	33	29
1/2"	2503790	2506213	36	34
3/4"	2503791	2503007	40	40
1"	2503792	2503001	45	49
1 1/4"	2503907	2506214	50	58.5
1 1/2"	2503793	2506215	50	66
2"	2503908	2506216	55	81

* Kupplung flachdichtend / Accouplement à joint plat (PTFE)

** Kupplung konisch dichtend / Accouplement conique

Kupplung IG/AG

Accouplement mâle/femelle



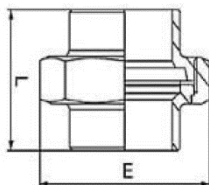
Gewinde / Filetage	No. TRI-MATIC*	No. TRI-MATIC**	K	L
1/8"	2503909	2506217	39	27
1/4"	2503794	2503008	40	24
3/8"	2503795	2506218	43	29
1/2"	2503796	2503011	54	36.5
3/4"	2503797	2506219	54.5	40
1"	2503798	2503002	62	49
1 1/4"	2503910	2503009	65	63
1 1/2"	2503911	2506220	74.1	71
2"	2503912	2506221	76.2	83.5

* Kupplung flachdichtend / Accouplement à joint plat (PTFE)

** Kupplung konisch dichtend / Accouplement conique

Kupplung Schweissenden

Accouplement Embouts à souder



Gewinde / Filetage	No. TRI-MATIC*	No. TRI-MATIC**	E	L
1/4"	1722663	1701453	26.5	31
3/8"	1722664	1701969	31	32
1/2"	1705085	1701454	37.5	36
3/4"	1705084	1701455	46	43.2
1"	1703641	1701456	51	47
1 1/4"	1703642	1701581	63	51
1 1/2"	1703643	1701582	71	54.9
2"	1703644	1701583	83.5	64

* Kupplung flachdichtend / Accouplement à joint plat (PTFE)

** Kupplung konisch dichtend / Accouplement conique

Bitte fragen Sie unsere aktuellen Preise an!

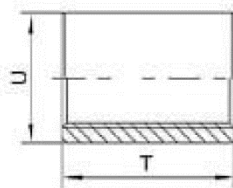
N'hésitez pas à demander nos prix actuels!

TRI-FIT INOX

Gewindefittings aus Edelstahl / Raccords en Inox

Muffe gedreht

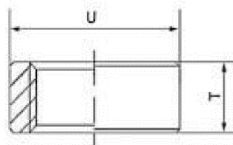
Manchon tourné



Gewinde / Filetage	No. TRI-MATIC	T	U
1/8"	2503808	17	14
1/4"	2503809	25	18
3/8"	2503810	26	21.3
1/2"	2503811	34	26
3/4"	2503812	36	31.5
1"	2503813	43	39.5
1 1/4"	2503814	48	48.3
1 1/2"	2503815	48	54.5
2"	2503816	56	66.3
2 1/2"	2504512	65	82
3"	2504513	71	95

Halbe Muffe gedreht

Demi manchon tourné



Gewinde / Filetage	No. TRI-MATIC	T	U
1/8"	2503915	7.5	15
1/4"	2503916	11	18.5
3/8"	2503806	11.5	21.3
1/2"	2503807	15	26.4
3/4"	2503917	16.5	31.8
1"	2503918	19	39.5
1 1/4"	2503919	22	48.3
1 1/2"	2503920	22	54.5
2"	2503921	26	66.3
2 1/2"	2503988	30	82
3"	2503989	33	95

Bitte fragen Sie unsere aktuellen Preise an!

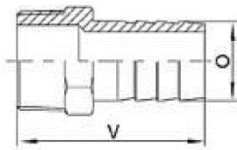
N'hésitez pas à demander nos prix actuels!

TRI-FIT INOX

Gewindefittings aus Edelstahl / Raccords en Inox

Schlauchtülle

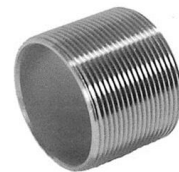
Douille



Gewinde / Filetage	No. TRI-MATIC	O	V
1/8"	2503876	7	35
1/4"	2503877	9	39
1/4"	1716248	11	43
3/8"	2503878	11	43
3/8"	1717523	13	45
1/2"	2503879	14	49
1/2"	1719391	19	51
3/4"	1719056	19	57.5
3/4"	2503880	20	52.5
1"	2503881	26	60
1 1/4"	2503882	33	68
1 1/2"	2503883	39	78
2"	2503884	51	87.5

Gewindenippel DIN 2982

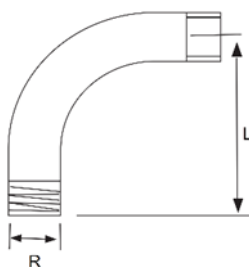
Raccord fileté DIN 2982



Gewinde / Filetage	No. TRI-MATIC	L
1/8"	2504400	22
1/4"	2504401	22
3/8"	2504402	24
1/2"	2504403	25
3/4"	2504404	30
1"	2504405	40
1 1/4"	2504406	38
1 1/2"	2504407	38
2"	2504408	45

Gewindekrümmer 90°

Coude fileté à 90



Gewinde / Filetage	No. TRI-MATIC	L
3/8"	2504429	75
1/2"	2504430	80
3/4"	2504431	105
1"	2504432	120
1 1/4"	2504433	141
1 1/2"	2504434	163
2"	2504435	203

Bitte fragen Sie unsere aktuellen Preise an!

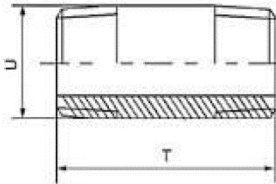
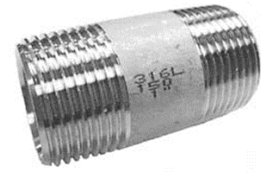
N'hésitez pas à demander nos prix actuels!

TRI-FIT INOX

Gewindefittings aus Edelstahl / Raccords en Inox

Rohrdoppelnippel
INOX EN 10241 (DIN 2982)

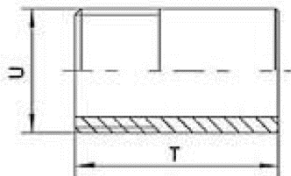
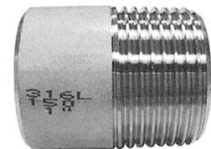
Mamelon tube filetage
INOX EN 10241 (DIN 2982)



Gewinde / Filetage	No. TRI-MATIC	T	U
1/8"	2504800	40	10.2
1/4"	2504410	40	14
1/4"	1701541	60	13.5
1/4"	2504409	70	13.5
1/4"	1701542	100	13.5
3/8"	2504411	40	17.2
3/8"	2504450	50	17.2
3/8"	2504452	60	17.2
3/8"	1709425	100	17.2
1/2"	2504412	60	21.4
1/2"	2503006	100	21.3
1/2"	2504503	120	21.3
1/2"	1711855	200	21.3
3/4"	1709200	40	26.9
3/4"	2504413	60	26.7
1"	1709206	50	33.7
1"	2504414	60	33.7
1"	2504427	80	33.7
1"	1709208	100	33.7
1"	1713293	180	33.7
1 1/4"	1709209	50	42.4
1 1/4"	2504415	80	42.4
1 1/4"	1709210	120	42.4
1 1/2"	2504416	80	48.3
1 1/2"	1717630	100	48.3
1 1/2"	1709212	120	48.3
2"	1711735	80	60.3
2"	2504417	100	60.3
2 1/2"	2504500	100	76.1
3"	2504501	120	88.9

Anschweissnippel
INOX EN 10241 (DIN 2982)

Mamelon a souder
INOX EN 10241 (DIN 2982)



Gewinde / Filetage	No. TRI-MATIC	T	U
1/8"	2504801	30	10.2
1/4"	2504419	30	13.5
1/4"	1701543	60	13.5
1/4"	1701544	100	13.5
3/8"	2504420	30	17.2
1/2"	2504421	35	21.3
3/4"	2504422	40	26.9
1"	2504423	40	33.7
1 1/4"	2504424	50	42.4
1 1/2"	2504425	50	48.3
2"	2504426	50	60.3
2 1/2"	2504545	60	76.1
3"	2504436	70	88.9
4"	1709151	80	114.3

Bitte fragen Sie unsere aktuellen Preise an!

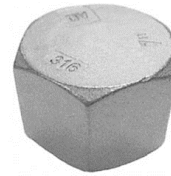
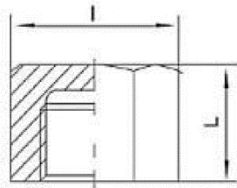
N'hésitez pas à demander nos prix actuels!

TRI-FIT INOX

Gewindefittings aus Edelstahl / Raccords en Inox

Kappe 6kt. / 8kt.

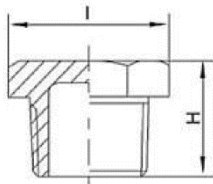
Capuchon hex. / oct.



Gewinde / Filetage	No. TRI-MATIC	I	L
1/8"	2504181	14.5	13.1
1/4"	2504182	16	15
3/8"	2504183	19.5	16
1/2"	2504184	23.5	20
3/4"	2504185	30	22
1"	2504186	37	22
1 1/4"	2504187	47	25.5
1 1/2"	2504188	52.5	25
2"	2504189	65	28

Stopfen konisch 6kt. / 8kt.

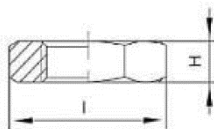
Bouchon hex. / oct.



Gewinde / Filetage	No. TRI-MATIC	H	I
1/8"	2504199	11.5	10.5
1/4"	2504200	14	14.5
3/8"	2504201	16	18
1/2"	2504202	19.5	22
3/4"	2504203	21	28
1"	2504204	24	35
1 1/4"	2504205	26.5	44
1 1/2"	2504206	26.5	50
2"	2504207	31.5	61.5

Mutter 6kt. / 8kt.

Ecrou hex. / oct.



Gewinde / Filetage	No. TRI-MATIC	H	I
1/4"	2504437	6	18
3/8"	2504438	6	22
1/2"	2504439	7	27
3/4"	2504440	9.8	36
1"	2504441	7	40
1 1/4"	2504442	11	50
1 1/2"	2504443	12	58.5
2"	2504444	13	68

Bitte fragen Sie unsere aktuellen Preise an!

N'hésitez pas à demander nos prix actuels!